

# SUREFIT™ VISOR CARRIER FOR MK® RANGE

PRODUCT CODE: ANV000-001-10A

CLIPS INTO UNIVERSAL SLOT & FITS BOTH STANDARD & SHORT PEAK HELMETS

**TECHNICAL  
SPECIFICATION**

**HEAD PROTECTION**

**ACCESSORIES**

## INSTRUCTIONS FOR USE

In use ensure that the faceshield fits comfortably and securely on the head

Ensure that a suitable visor has been fitted with the protective film removed from it

Ensure the visor is in place before entering the hazard area

## DIMENSIONS OF VISOR CARRIER

Length: 239mm

Width: 214mm

Height: 53mm

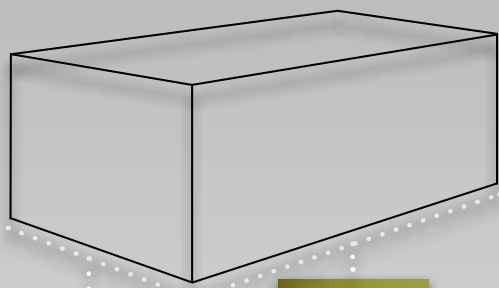
Weight: 124g (Approx.)



## DIMENSIONS OF OUTER PACKAGING

Quantity: 100

Weight: 16.5kg (Approx.)



**HEIGHT:**  
410mm

**WIDTH:**  
557mm

**LENGTH:**  
595mm

## MATERIALS

Body: Mineral Filled Polypropylene

Springs: Steel

Fitting Attachments: ABS

## LIMITATIONS OF USE

Protection will only be offered if the visor carrier and a visor are fitted correctly to a suitable Industrial Safety Helmet with the helmet attachment kit

If the visor becomes scratched or damaged they should be replaced

Do not apply paint, solvents, adhesives or self-adhesive labels, except in accordance with instructions from the manufacturer

Not suitable for use with all chemicals - if you are unsure contact your supplier or JSP for help and advice

## CLEANING & MAINTENANCE

The unit may be cleaned with soap and warm water and dried with a soft cloth

Do not clean with chemical or abrasive cleaners

Store out of direct sunlight away from chemicals and extremes of temperature

## CONFORMITY

Meets the requirements of EN166

EC Type Examination Certificate Number 85724, issued by BSi Product Certification

# SUREFIT™ VISOR CARRIER FOR EVO® RANGE

PRODUCT CODE: ANV000-001-108

CLIPS INTO UNIVERSAL SLOT & FITS BOTH STANDARD & SHORT PEAK HELMETS

**TECHNICAL  
SPECIFICATION**

**HEAD PROTECTION**

**ACCESSORIES**

## INSTRUCTIONS FOR USE

In use ensure that the faceshield fit comfortably and securely on the head

Ensure that a suitable visor has been fitted with the protective film removed from it

Ensure the visor is in place before entering the hazard area

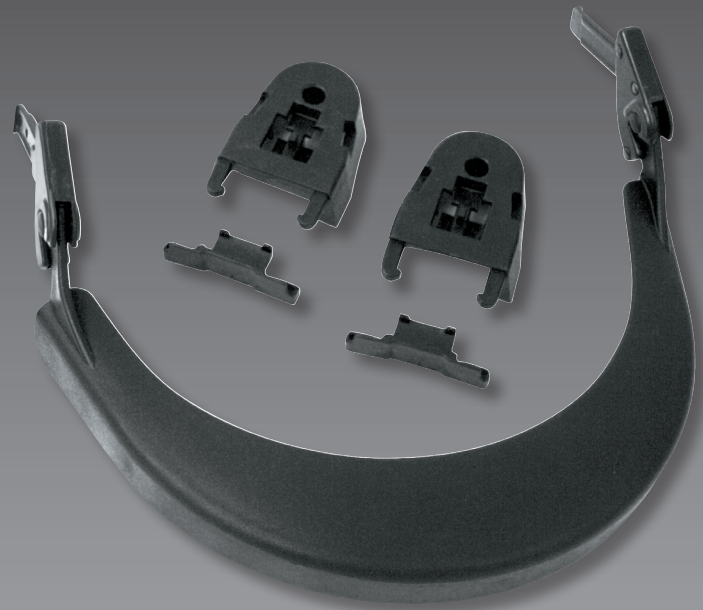
## DIMENSIONS & SPECIFICATIONS OF PRODUCT

Length: 239mm

Width: 214mm

Height: 53mm

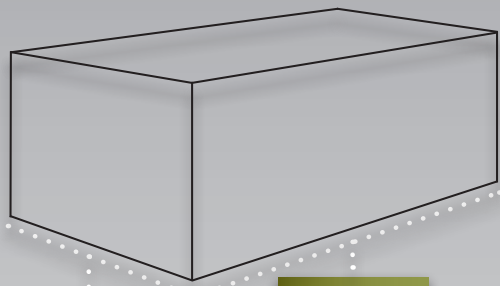
Weight: 124g (Approx.)



## DIMENSIONS OF OUTER PACKAGING

Quantity: 20

Weight: 3.2kg (Approx.)



**HEIGHT:**  
250mm

**WIDTH:**  
310mm

**LENGTH:**  
440mm

## MATERIALS

Body: ABS

Springs: Steel

Fitting Attachments: ABS

## LIMITATIONS OF USE

Protection will only be offered if the visor carrier and a visor are fitted correctly to a suitable Industrial Safety Helmet with the helmet attachment kit

If the visor becomes scratched or damaged they should be replaced

Do not apply paint, solvents, adhesives or self-adhesive labels, except in accordance with instructions from the manufacturer

Not suitable for use with all chemicals - if you are unsure contact your supplier or JSP for help and advice

## CLEANING & MAINTENANCE

The unit may be cleaned with soap and warm water and dried with a soft cloth

Do not clean with chemical or abrasive cleaners

Store out of direct sunlight away from chemicals and extremes of temperature

## CONFORMITY

Meets the requirements of EN166 B39

EC Type Examination Certificate Number 85724, issued by BSI Product Certification